

DP DESIGN
♦ *POINT*

 **GLC**®
PAINTS

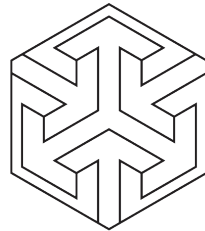
IN COLLABORATION *WITH*

enlighten

R'KAN
EDITION

K E N
S H O

Le LAB



NADIM
GROUP
est. 1978

مؤسسة
السلاب
مصطفى السلاب

T L T 
CONCEPTS

BRUTAL YET MINDFUL



We often think of utopias as the ideal aspiration, however, Utopias are inherently exclusionary, and Ever since the industrial revolution, and the boom of technology, humans have been forced into introversion. Looking to the future, the hope is that our built environment will encourage us to look outward. To achieve a more genuine concept of “community”, mindfulness and social awareness.



We hope that visions of the future exalt the very essence of gazing beyond,
as the future compels us to turn within.
Ours shall be a pursuit of connecting with the bountiful realms of nature
and the intricate tapestry of humanity.





No phenomenon can be isolated, but has repercussions through every aspect of our lives. We are learning that we are a fundamental part of nature's ecosystems.



Because for better or worse, by presence or absence,
our home is a crucial point of reference—in memory, feeling,
and imagination—for inventing the story of ourselves, our lifenarrative,
for understanding our place in time.
Because it is a vital link through which we connect with others
and with the world and the universe at large.

The architecture acts as a gentle buffer between the fragility of human existence and the vast world outside. How different people choose to build connections in their environment essentially defines those societies and their relationships to conditions around them.

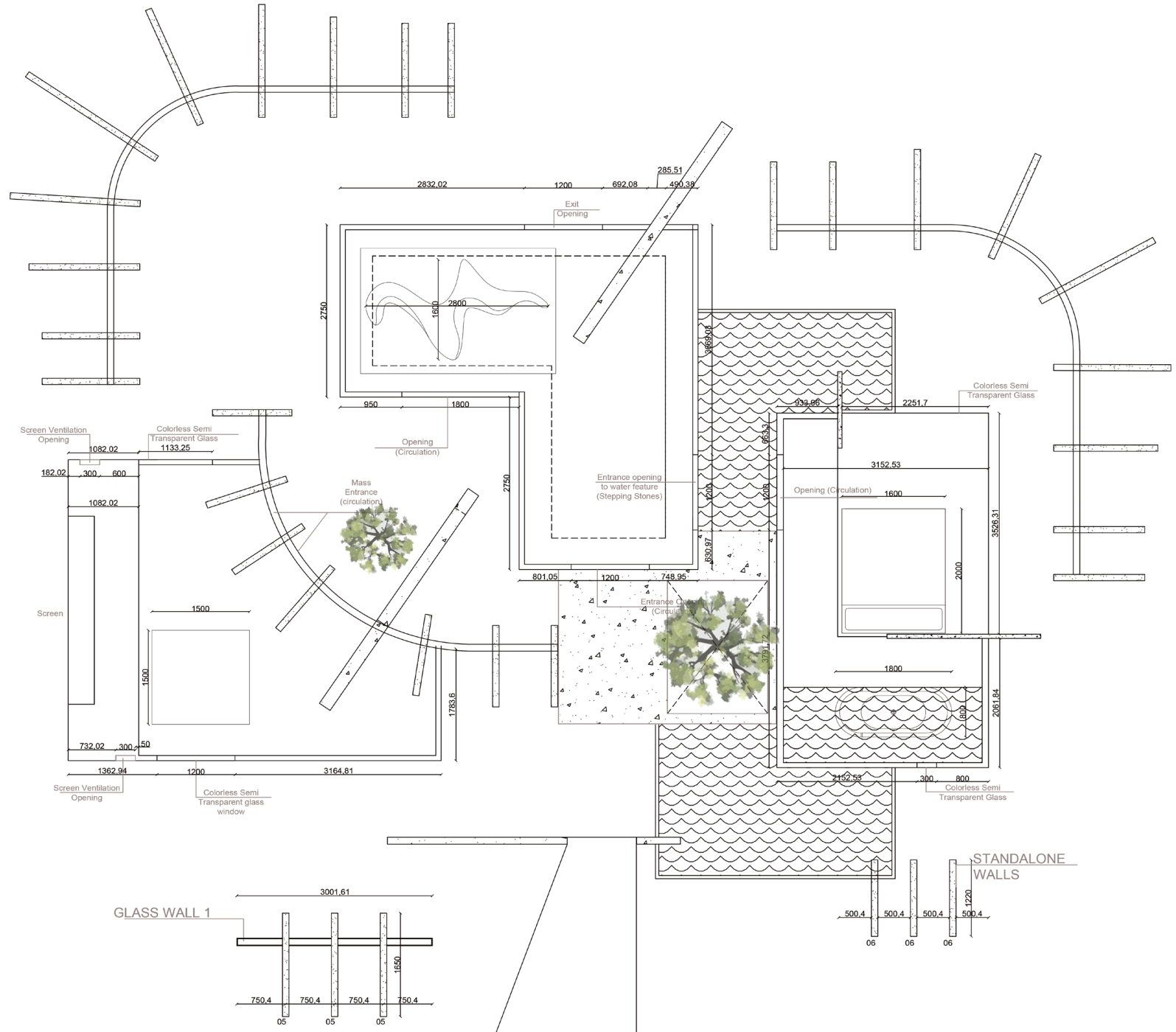








LAYOUT



COLOR PALETTE

INTERIOR

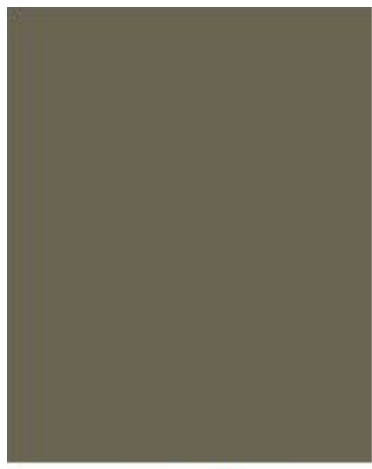


NCS S 0502-Y20R

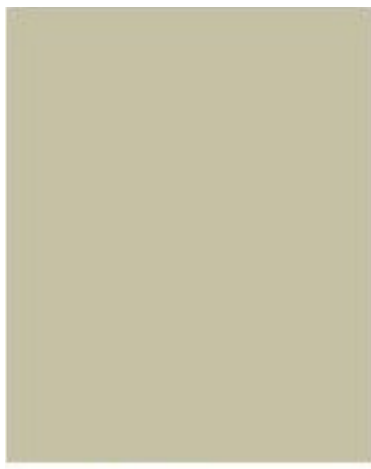
EXTERIOR



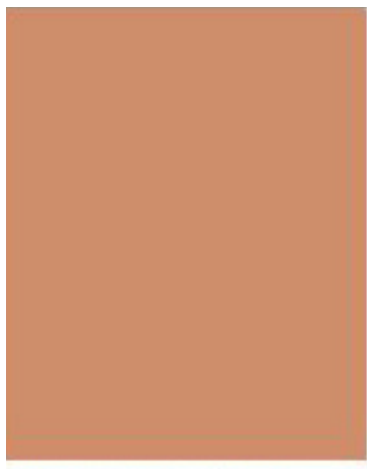
NCS S 0502-Y20R



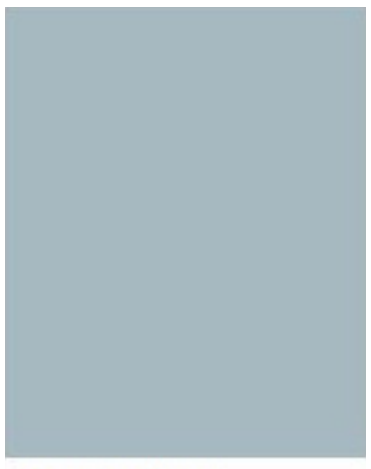
NCS S 6010-Y10R



NCS S 2010-Y



NCS S 2040-Y60R



NCS S 2010-B

أَهْلًا وَسَهْلًا

In the context of this greeting, it's used to tell our guests that they're where they belong, that they're a part of this place and they're welcome here.
We're saying: "You're with your people."

In Arabic culture, one of the highest forms of welcoming a guest is telling them they are not a guest, that they are an insider.

When you greet someone with ahlan wa sahan, it means that their visit is a pleasure and their presence is never a burden.

ENTRANCE

MOODBOARD

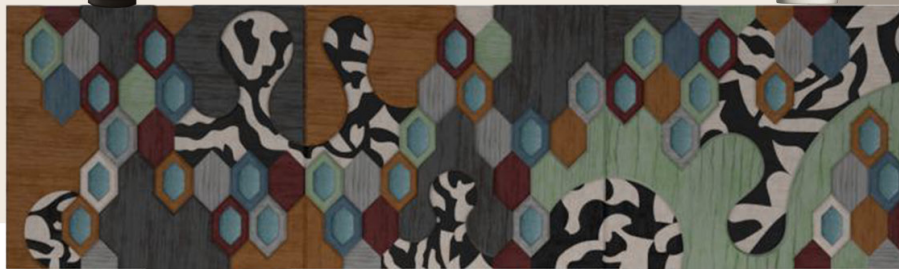
ARTWORK BY LE LAB



LAMP BY ENLIGHTEN



AROMATIC OIL BY KENSHO



CONSOLE BY R'KAN



دعوٲنا نجلس و نتحدث

Let Us Sit and Talk is not just a call for polite conversation;
it's a call for courage, vulnerability, and intellectual honesty.
It's a call to action to embrace our differences
and exchange our similarities.

It's time to step outside our comfort zones, engage in meaningful dialogue,
and work together to build a better world, one conversation at a time.

RECEPTION

MOODBOARD



CHANDELIER BY ENLIGHTEN

SOFA BY LE LAB

LAMP BY ENLIGHTEN

من خيرات الارض

Themes of rootedness and connection to the land are an integral part of maintaining our authentic culture and history, underscoring our unwavering commitment to their preservation.

In many indigenous cultures, trees are considered members of the family, as the farmer charts their growth and receives the gift of fruit.


Let us pray for every tree that is uprooted from its place,
and every farmer who plants a new one.

KITCHEN/DINING

MOODBOARD



LAMP
BY ENLIGHTEN



TABLEWARE BY LE LAB



GRAPE INSTALLATION
BY TLT CONCEPTS



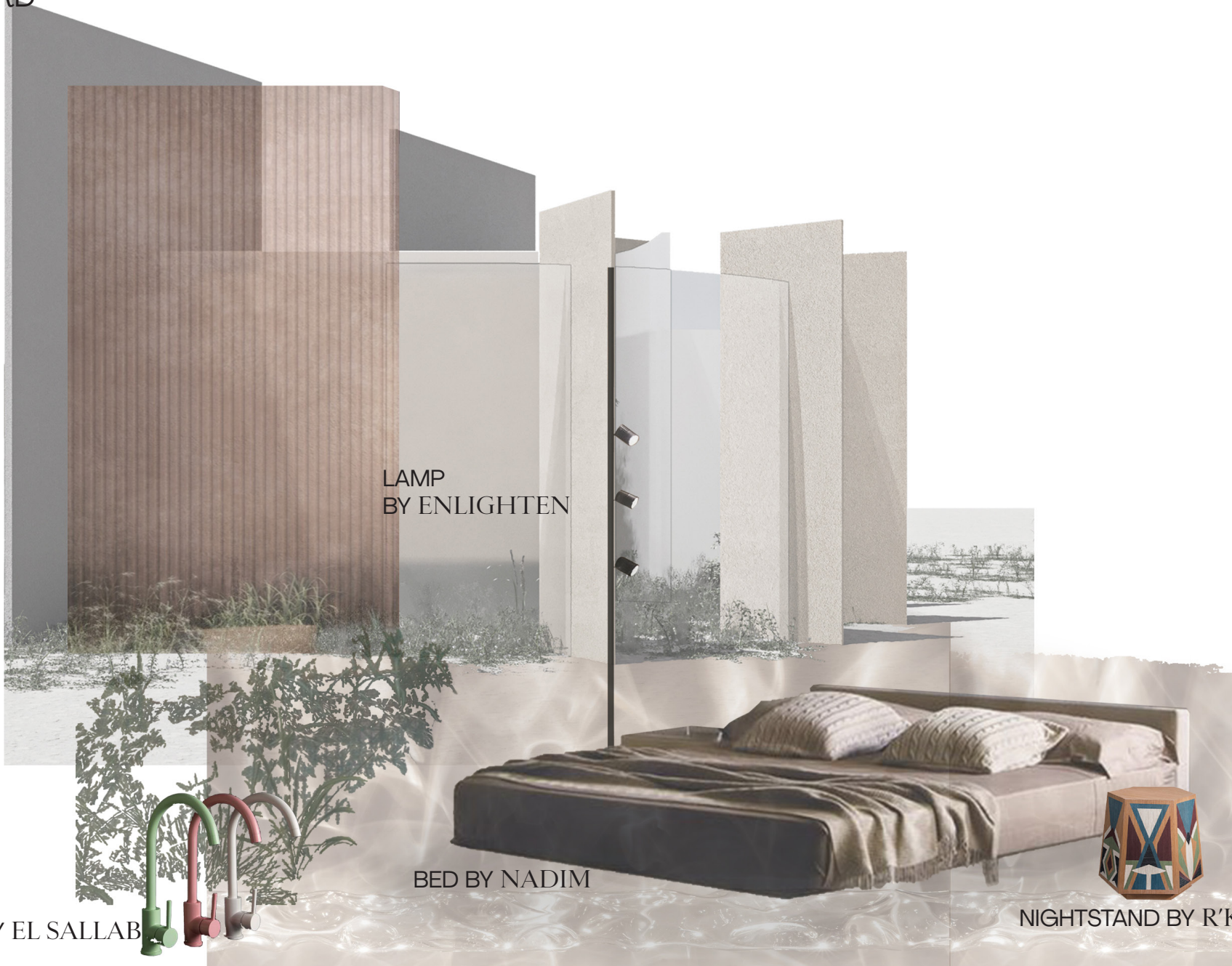
انظر بغير عينيك،
واسمع بغير أذنيك،
واخش بغير قلبك.

While the space is dedicated to self isolation, We encourage you to take the time to step outside of your own biases and experiences to see, hear, and feel the world through different lenses.

By experiencing the world through “foreign” senses and emotions, you cultivate a deeper understanding of others’ joys, struggles, and fears. This fosters compassion and a desire to connect with people on a deeper level.

PRIVATE SPACE

MOODBOARD



LAMP
BY ENLIGHTEN

BED BY NADIM

FAUCETS BY EL SALLAB

NIGHTSTAND BY R'KAN

THANK YOU!